

9532 Chain riveter set for workshops, 20 pieces

Kraftform Kompakt user-specific sets



BICYCLE



FINE
TOOTH



RAPIDAPTOR
TECHNOLOGY



HEX-PLUS



KRAFTFORM
ERGONOMICS



ANTI
ROLL-OFF

EAN:	4013288229571	Size:	195x130x50 mm
Part number:	05136042001	Weight:	637 g
Article number:	9532	Country of origin:	CZ
		Customs tariff number:	82079030

- Tool set for the bike workshop
- With Wera Zyklop Mini 1 bit ratchet, 816 R bitholding screwdriver, one chain riveter, one chain fastener, spare parts set chain riveter pin, one chain lock tool, 10 bits with 89 mm length, 2 bits with 25 mm length
- With chain riveter and chain fastener with exchangeable rivet pin for opening and closing bicycle chains. Suitable for single-speed chains, up to 12-speed
- Quick-release bike chain tool for opening and closing chains with a chain lock
- In robust pouch

18-piece tool set for the bike workshop. With the Zyklop Mini bit ratchet and the bitholding screwdriver and the 89 mm and 25 mm length bits, hexagonal socket, TORX® and Phillips-head Phillips screws can be operated. With the included chain riveter and chain fastener with exchangeable rivet pin, bicycle chains can be opened and closed (suitable for single-speed chains, up to 12-speed). The chain lock tool makes it easier to open and close chains with a chain lock.

Web link

https://products.wera.de/en/kraftform_kompakt_kraftform_kompakt_user-specific_sets_9532.html

Wera - 9532
05136042001 - 4013288229571

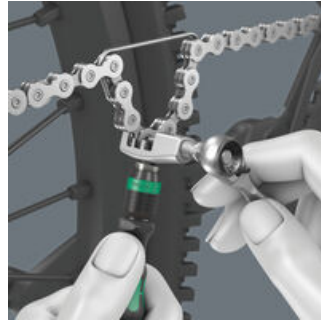
Wera Werkzeuge GmbH
Korzter Straße 21-25
D-42349 Wuppertal
Tel: +49 (0)2 02 / 40 45-0
E-Mail: info@wera.de

Kraftform Kompakt user-specific sets

Chain tools

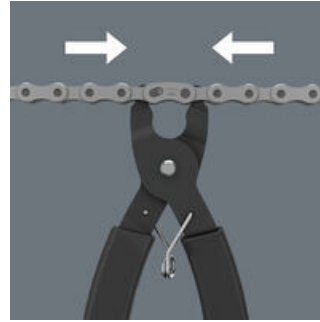


With chain riveter and chain fastener with exchangeable rivet pin for opening and closing bicycle chains. Suitable for single-speed chains, up to 12-speed



With the included chain tools, chains can be loosened and reconnected; for opening and closing bicycle chains. Suitable for single-speed chains, up to 12-speed.

Chain lock tool



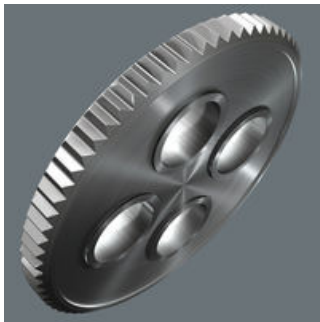
The chain lock tool makes it easier to open lockable chain locks for cleaning or replacing chain links.

The Zyklop Mini Ratchets



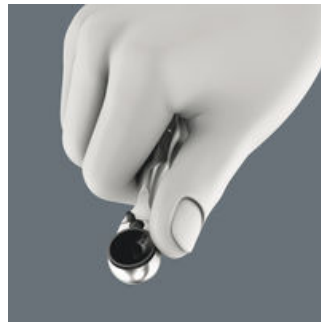
For all difficult-to-access applications.

The Zyklop Mini



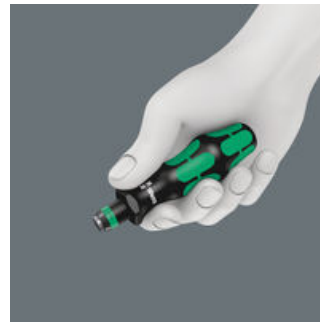
The fine tooth mechanism, with its 60 teeth, allows a small return angle of only 6° - ideal for precision work.

Rapid screwdriving



Thumbwheel enables rapid screwdriving, even when there isn't sufficient room for ratcheting use.

Prevents hand injuries



The outstanding design of the Kraftform handle that fits perfectly into the hand prevents hand injuries such as blisters and calluses.

Handle/interchangeable blade system



The handle/interchangeable blade system allows rapid exchange of the blades required for a wide range of applications.

Web link

https://products.wera.de/en/kraftform_kompakt_kraftform_kompakt_user-specific_sets_9532.html

Wera - 9532
05136042001 - 4013288229571

Wera Werkzeuge GmbH
Korzter Straße 21-25
D-42349 Wuppertal
Tel: +49 (0)2 02 / 40 45-0
E-Mail: info@wera.de

9532 Chain riveter set for workshops, 20 pieces

Kraftform Kompakt user-specific sets



Set contents:

8001 A Bit Ratchet 1/4", 1/4" x 87 mm



1x 1/4" x 87 mm



816 R Bitholding screwdriver with Rapidaptor quick-release chuck, 1/4" x 119 mm



05051462001

1x 1/4" x 119 mm



851/4 Z bits, PH 1 x 89 mm



05059760001

1x PH 1 x 89 mm

05059775001

1x PH 2 x 89 mm



867/4 Z TORX® bits, TX 10 x 89 mm



05060186001

1x TX 10 x 89 mm

05060189001

1x TX 25 x 89 mm



Web link

https://products.wera.de/en/kraftform_kompakt_kraftform_kompakt_user-specific_sets_9532.html

Wera - 9532

05136042001 - 4013288229571

Wera Werkzeuge GmbH

Korzter Straße 21-25

D-42349 Wuppertal

Tel: +49 (0)2 02 / 40 45-0

E-Mail: info@wera.de

9532 Chain riveter set for workshops, 20 pieces

Kraftform Kompakt user-specific sets

840/4 Z bits, 2 x 89 mm



05059628001	1x	2 x 89 mm
05059629001	1x	2.5 x 89 mm
05059630001	1x	3 x 89 mm
05059631001	1x	4 x 89 mm
05059632001	1x	5 x 89 mm
05059633001 ¹⁾	1x	6 x 89 mm

1) Hexagonal blade

840/1 Z bits, 5 x 25 mm



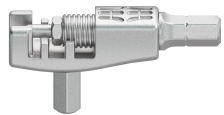
05056325001	1x	5 x 25 mm
05056335001	1x	8 x 25 mm

9512 Chain-Hook



1x 9512 Chain-Hook

9513 Chain Tool



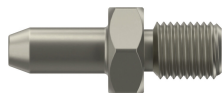
1x 9513 Chain Tool

9533 Quick-release bike chain tool, 167.5 mm



1x 167.5 mm

9534 Spare rivet pin for 9513 chain riveter, 15 mm



3x 15 mm

Web link

https://products.wera.de/en/kraftform_kompakt_kraftform_kompakt_user-specific_sets_9532.html

Wera - 9532

05136042001 - 4013288229571

Wera Werkzeuge GmbH

Korzter Straße 21-25

D-42349 Wuppertal

Tel: +49 (0)2 02 / 40 45-0

E-Mail: info@wera.de